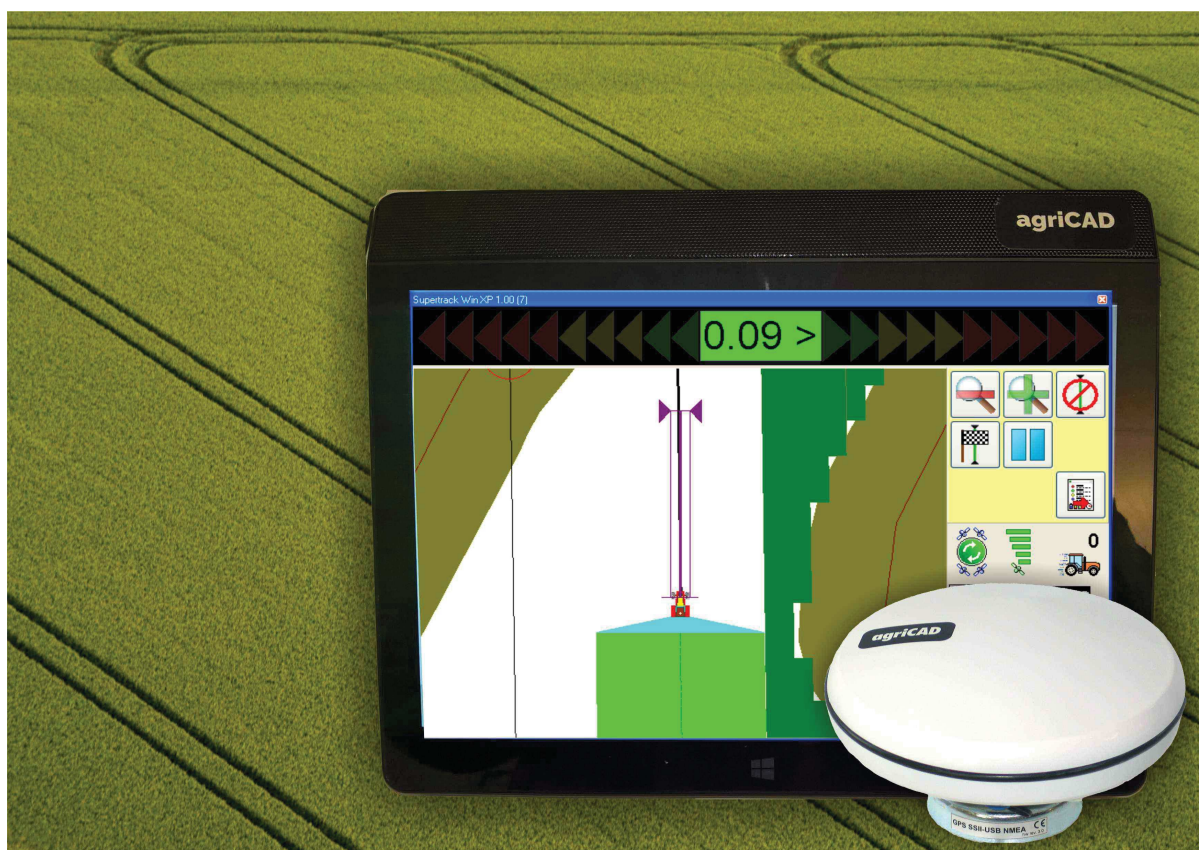


PARALLEL TRACKING SYSTEM

GPS FOR PRECISION FARMING

MODEL ST61

GPS for parallel tracking, helpful in your daily works!



Screen size: **10** INCH Touch Screen - power supply 12 volts . " 32 Giga RAM
Hard Disk - Wifi connection with your phone



Maximum size of monitor
30 cm diagonal.
Real size of the screen 24 cm.

S.C.S. survey CAD system SRL

Viale della Tecnica, 34 - 37064 Povegliano Veronese - Verona - Italy
Tel 0039 337 486191 - 0039 375 5640270



You can easily install the guide all over the cabin, thanks to the solid spheres fitting.

It is possible to buy more spheres for more machinery to make easier the movement from a tractor to another.

1x



1x



An high performance magnetic Antenna with a 3.00 mt. USB cable, that can be installed on the roof of the tractor.



The monitor has 4 USB fitting: two lateral for connecting the Antenna and the system key and two on the top for office use.

Windows 10 is intalled on the device.

Includes:

WI FI

2 giga RAM - 32 Giga ROM SSD

7inch IPS 1280x800 Mini PC

HDMI 1 (V1.4A)

Ethernet 1 (Gigabit)

With the two lateral USB fitting it's possible to connect the ANTENNA and the system key.



In winter time you can move the computer from tractor to your office and easily use it with a 220 Volt power supply.

In this case you can control your previous works and plan the future ones.

It's also possible to manage your data of your farm book.



The system is supplied with 2 boxes: one for the monitor and one for accessories.



Antenna cable



Magnetic base

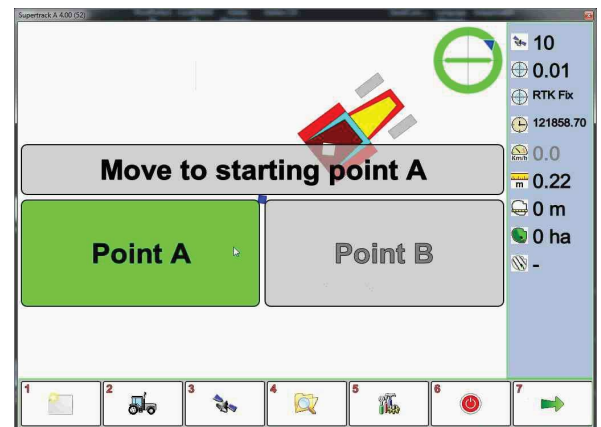


Mini PC support with cables



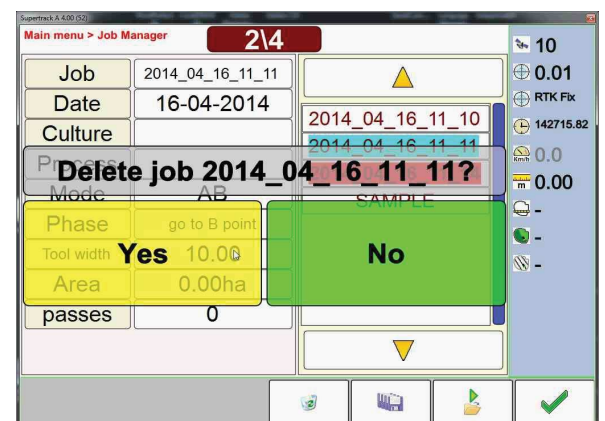
The standard software installed on the device is A-B Dritto. But you can choose to add different types of software at the moment of the purchase.

The picture shows an example of the selection of the start point (A) and the finish point (B). While the machine is working you don't need to do anything, the process is automatic.



The monitor is **TOUCH SCREEN**.

You can select all the operations using your fingers.



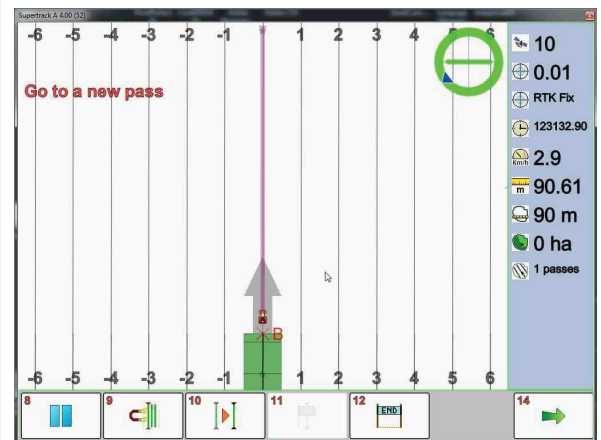
You can always see the real position of the machine in the field.



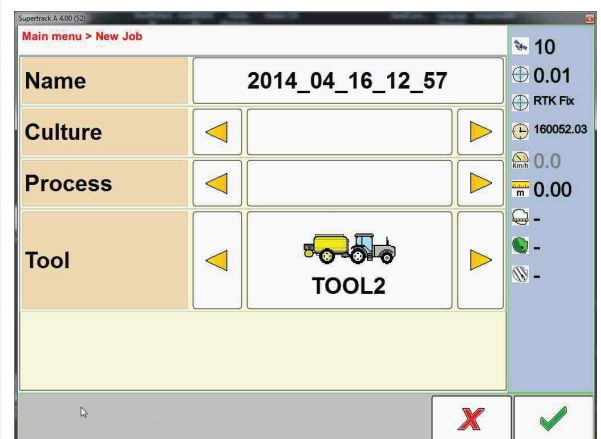
The PAUSE button allows you to temporary stop your work while you have to provide new water to the machine.



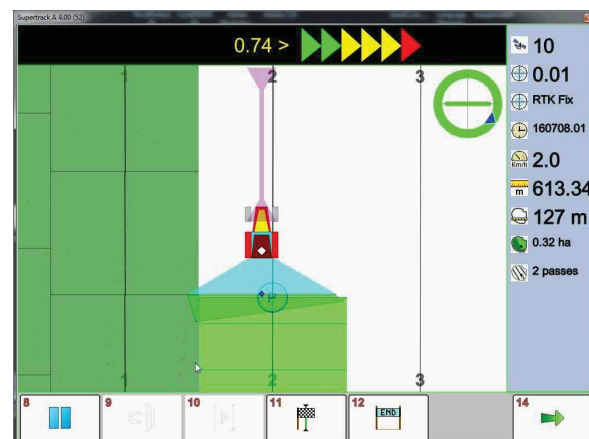
You can easily controll the area of work that you have done or that you still have to do.



It is possible to quickly set new works thanks to configured data.



Error and accuracy are shown on the top of the monitor.

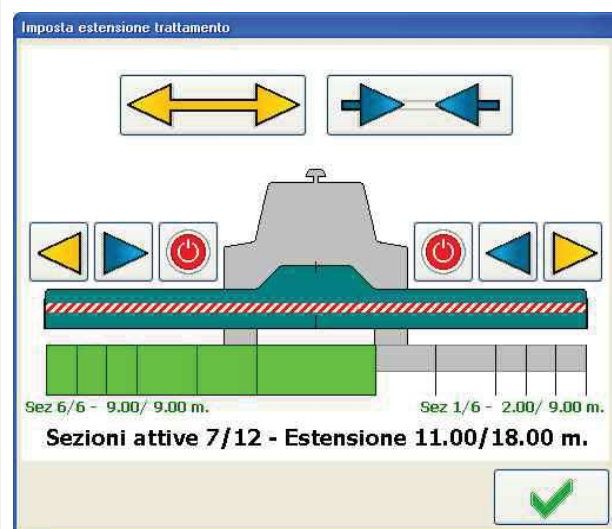


In the end, the screen shows the work done and potential errors in order to help you to improve future works.

With AGRICAD program, that you can buy separately, it's possible to print and classify all works.



Management of section without limit of number and dimensions



You can use an external box to measure and drive the sections

Box not included.

