

PARALLEL TRACKING SYSTEM

GPS FOR PRECISION FARMING

NEW MODEL ST62 PLUS

GPS for parallel tracking, helpful in your daily works!



Professional Rugged Tablet 10" Monitor
Stronger, thinner and more resistant with IP67
4+64G, Camera, 1200mAh Lithium Battery



You can easily install the guide all over the cabin, thanks to the solid spheres fitting.

It is possible to buy more spheres for more machinery to make easier the movement from a tractor to another.

1x



1x





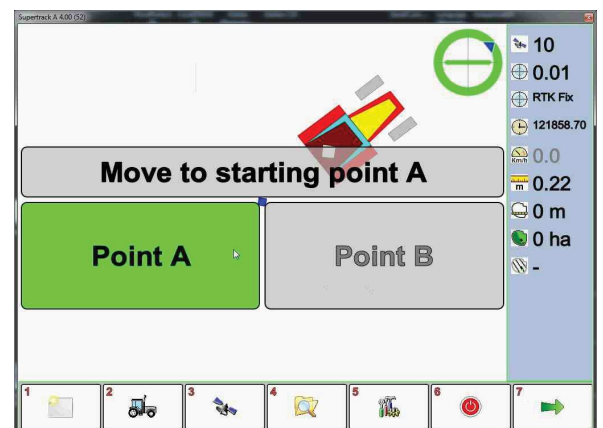
Antenna Cable

An high performance magnetic Antenna with a 3.00 mt. USB cable, that can be installed on the roof of the tractor.



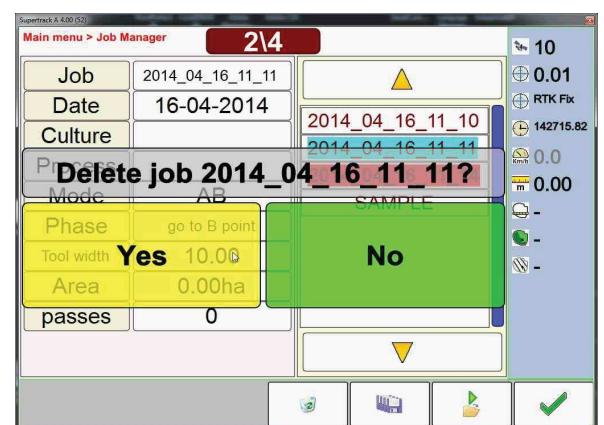
The standard software installed on the device is A-B Dritto. But you can choose to add different types of software at the moment of the purchase.

The picture shows an example of the selection of the start point (A) and the finish point (B). While the machine is working you don't need to do anything, the process is automatic.



The monitor is **TOUCH SCREEN**.

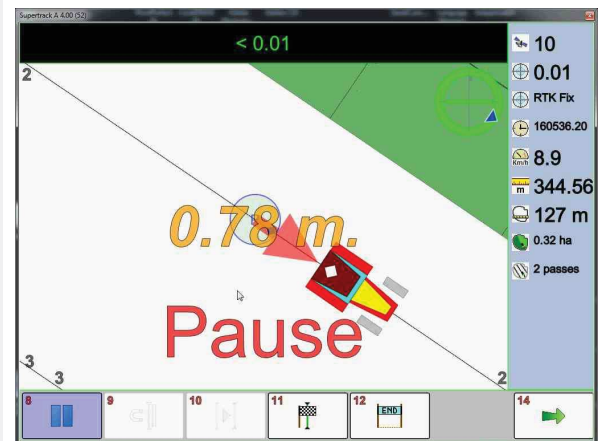
You can select all the operations using your fingers.



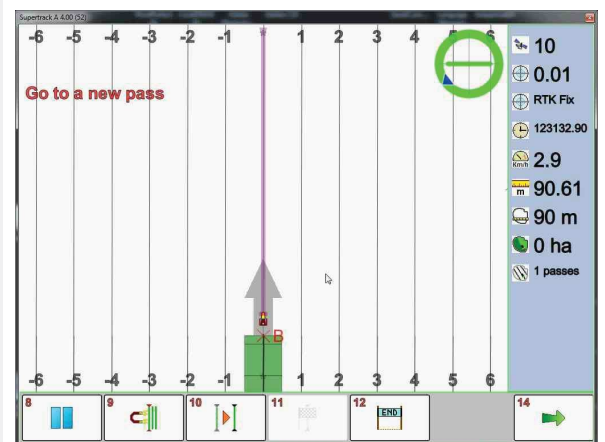
You can always see the real position of the machine in the field.



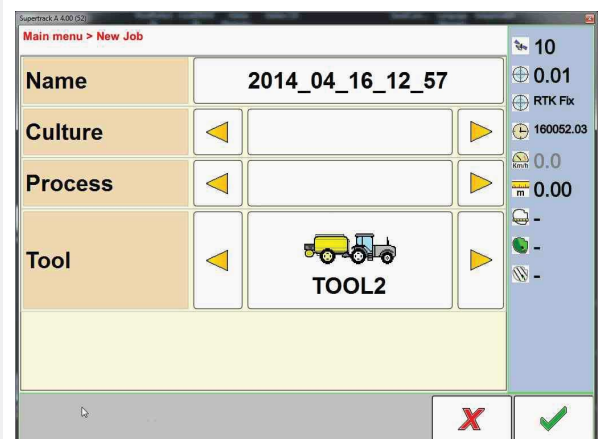
The PAUSE button allows you to temporary stop your work while you have to provide new water to the machine.



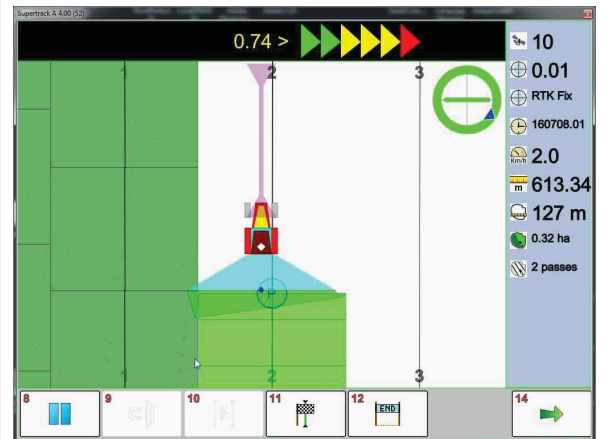
You can easily controll the area of work that you have done or that you still have to do.



It is possible to quickly set new works thanks to configured data.

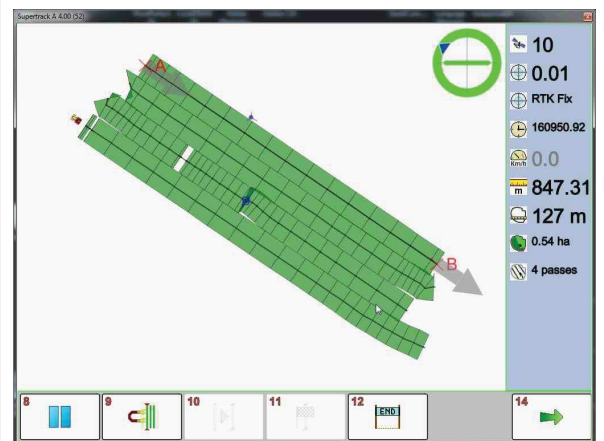


Error and accuracy are shown on the top of the monitor.

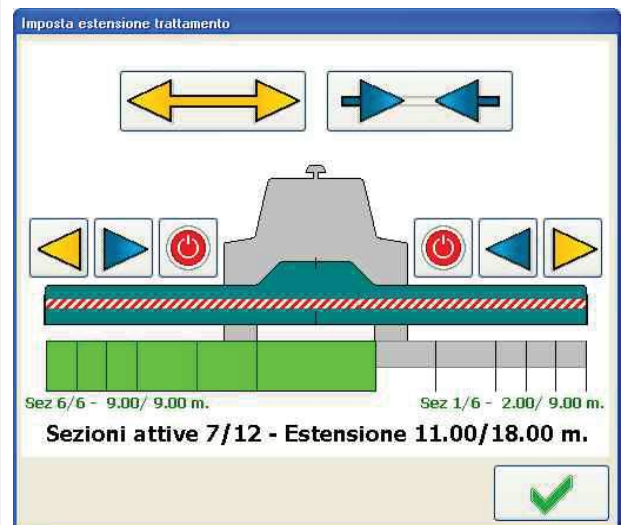


In the end, the screen shows the work done and potential errors in order to help you to improve future works.

With AGRICAD program, that you can buy separately, it's possible to print and classify all works.



Management of section without limit of number and dimensions.



You can use an external box to measure and drive the sections

Box not included.

